

Alg@line *Alg@line*

Alg@line *Alg@line*

Alg@line **Alg@line**

Alg@line *Alg@line*

20 years of Baltic Sea monitoring

Alg@line *Alg@line*

Alg@line *Alg@line*

1986-1989 Prehistory

- Mati Kahru, Sulev Nõmmann (EMI), Kaisa Kononen, Juha-Markku Leppänen
- Testing of flow-through systems in PEX 86 project (ICES Baltic patchiness study) on board Arnold Weimer
- Testing the system on board Aranda during the "vernal missions"

1990

Leading Actress

Georg Ots

Supporting Actors

Mati Kahru, Sulev Nõmmann (EMI)

MTLAlg@crew

Production

Estonian Shipping Company

Direction

Helsinki-Tallinn



- Unparalleled by her reputation as the home of the Finnish vodka-tourism, GO had the honour of being the 1st Alg@liner
- GO acted within Alg@line 1990-91, but steamed on her route altogether 1980-2000
- Mihail Gorbatšov sailed on board to Reykjavik for having a presidential meeting with Ronald Reagan back in 1987

1992

Leading Actress

Finnjet

Supporting Actors

MTLAlg@crew

Production

Henrik Bachér (Silja Line)

Direction

Helsinki-Travemünde



- The most famous Baltic ferry had a long career, grounding the Alg@line brand, first 1992-97 across the Baltic Proper, and yet 1998-2004 across the Gulf of Finland
- Built in 1977, she was the biggest and fastest ferry in the world at that time, with top speed of 30 knots
- In september 2005, she was rented to USA to accommodate students in the hurricane Katrina's disaster area

1992

Leading Actress

Fennia

Supporting Actors

Sinikka Jokela, Olle Siren
(Kokkolan vesi- ja ympäristöpiiri)

Eeva-Kaarina Aaltonen
(Pohjanmaan

vesiensuojeluyhdistys,
Pietarsaari)

Hans-Göran Lax (Vaasan vesi-
ja ympäristöpiiri)

Production

Wasa Line / Silja Line

Direction

Kokkola-Vaasa-Pietarsaari-
Skellefteå-Umeå



- Fennia was built in 1966, being the first Baltic ferry with a swimming pool
- She acted as an Alg@liner in the Quark area 1992-95.

1992

Leading Actress

**Konstantin
Simonov**

Supporting Actors

Vladimir Korbatsky,
Krylov Shipbuilding
Institute

MTLAlg@crew
Production

Baltic Shipping Co.

Direction

Helsinki-St. Petersburg



- KS was the former of the two Alg@liners especially targeted to monitor the state of the Eastern Gulf of Finland. KS acted 1992-95, and Silja Opera did the same in the 2000s
- Her Baltic career ended quite unexpectedly in 1996, when her departure from the Kiel harbor was denied due to bankruptcy of her shipping company

1993 - Alg@line's true beginning

Supporting Actors

Harri Hongell, Sinikka Jokela, Olle Siren (Kokkolan vesi- ja ympäristöpiiri)

Karl-Erik Storberg, Pertti Sevola, Hans-Göran Lax (Vaasan vesi- ja ympäristöpiiri)

Kauko Häkkinen, Jouko Hakala, Teija Virtanen (Turun vesi- ja ympäristöpiiri)

Tore Lindholm, Petra Öhman (Åbo akademi)

Ilppo Vuorinen, Anita Mäkinen (Saaristomeren tutkimuslaitos)

Kalevi Keynäs, Guy Hällfors, Jouko Pokki (Tvärminne)

Johanna Mattila Kyösti Jumppanen (Lounais-suomen vesiensuojeluyhdistys)

Ilppo Kettunen, Marja Kauppi (Kymen vesi- ja ympäristöpiiri)

Hilkka Viljamaa, Eeva-Riitta Puomio, Leena Villa (Helsingin vesi- ja ympäristöpiiri)

Liisa Lepistö, Pentti Kangas, Pirkko Kokkonen, Vesa Gran, Pirkko Kauppila (Vesi- ja ympäristöhallitus)

MTLAlg@crew

- The nationwide monitoring and dissemination of the state of the Baltic Sea environment commenced
- The weekly situation was mapped by phone meetings and the dissemination for the end-users was fax-based
- Mikaela Kruskopf invented the term Alg@fax

1995 - Alg@line into the web



- Kimmo Kahma brought up the benefits of using the internet as a communication platform
- The predecessor of the Baltic Sea Portal was introduced
- The Portal itself was released in 2002
- The Baltic Sea Portal 2006 (FI)
 - 136 portal news
 - 46 algae news
 - web hits 7.4 million

1996-

Leading Actresses

**Kristina Brahe &
Kristina Regina**

Supporting Actors

Pentti Välipakka, Pauli
Haimi (Kaakkois-Suomen
ympäristökeskus)

Production

Mikko Partanen (Kristina
Cruises)

Direction

Helsinki-Kotka-Vyborg-
St. Petersburg



- The explorers of the southern Finnish archipelago within the Alg@line started their career
- For KB, that career is still on-going, (although not without breaks), which makes KB currently the Alg@liner with the longest-lasting contract.
- KB and KR are the only Alg@liners that have ploughed through fresh waters

1996

Leading Actress

Outokumpu

Supporting Actors

Sinikka Jokela, Olle Siren, Hans-Göran Lax
(Länsi-Suomen ympäristökeskus)

Production

Outokumpu Shipping Oy

Direction

Kokkola-Rotterdam

- Outokumpu (odd knoll) deserves her name
 - Her route is really something else than the other ferries' ones
 - She is the only cargo ship that has acted as an Alg@liner
- She steamed on her route 1996-99 shipping Outokumpu Oy Kokkola zinc factory's products
- Her successor is in search

1998-99 New grand Alg@line

Leading Actress

Wasa Queen

Supporting Actors

Katja Pellikka (Helsingin kaupungin ympäristökeskus)

Mikaela Ahlman (Uudenmaan ympäristökeskus)

Production

Henrik Bachér, Mikael

Lindholm, Anders Nyman,

Birgitta Öhman, Christina

Nousiainen (Silja/Tallink Silja)

Direction

Helsinki-Tallinn



- WQ's role as an Alg@liner lasted 1998-99
- WQ was Fennia's route partner in the Quark area in the middle 90s

1999

Leading Actress

Finnjet

Supporting Actors

Andres Jaanus, Inga Lips,
Kaire Kaljurand, Lauri
London (EMI)

Production

Henrik Bachér, Mikael
Lindholm, Anders Nyman,
Birgitta Öhman, Christina
Nousiainen (Silja/Tallink
Silja)

Direction

Helsinki-Tallinn



■ Finnjet's shiny pale-faced afterlife as an Alg@liner lasted 1999-2004

1999

Leading Actress

Silja Serenade

Supporting Actors

Mikaela Ahlman (Uudenmaan ympäristökeskus)

Production

Henrik Bachér, Mikael Lindholm, Anders Nyman, Birgitta Öhman, Christina Nousiainen (Silja / Tallink Silja)

Direction

Helsinki-Maarianhamina-Tukholma



- SS has provided a huge dataset from the SW Finnish coastal area and the Archipelago Sea
- Currently, she is the longest-working Alg@liner with an uninterrupted career!

1998

Leading Actress

Finnpartner

Supporting Actors

Bernd Schneider (IOW)

MTLAlg@crew

Production

Anna-Liisa Perttilä,
Henrik Lindroos, Juha
Ahia, Kurt Kvikström
(Finnlines)

Direction

Helsinki-Travemünde



- FP was Finnjet's successor with a role of Baltic Proper steamer
- Actually, she did one better; her day-in lasted all the way to 2007, as compared to Finnjet's six years
- She holds an all-time record of collecting more water samples (over 6000 of 900 ml) than any other Alg@liner
- Finnjet (over 5000) got quite close ja Serenade (slightly less than 5000) has still chances to hit the pole position

1998 - CPR

Lead actresses

Hamnö

Transgard

Serenaden

Supporting Actors

MTLAlg@crew

Production

Kimmo Kari (Transfennica)

Direction

Helsinki/Hanko-Lübeck

Hamina-Lübeck

Hamina-Lübeck



- Continuous plankton recorder strengthened Alg@line's menu
- CPR was donated by Transfennica

1999 – Coastal guard's parade begins

Leading Actress

Turva

Supporting Actors

Hans-Göran Lax, Juha Katajisto, Hannu Jerohin
(Länsi-Suomen ympäristökeskus)

Direction

Gulf of Bothnia
2002-05

Leading Actress

Merikarhu

Sivuroolissa

MTLAlg@crew

Direction

Gulf of Finland 1999-

Leading Actress

Telkkä

Supporting Actors

Janne Suomela, Tapio Suominen (Lounais-Suomen ympäristökeskus)

Direction

Archipelago Sea 2000-



- Finnish Coastal Guard joined the Alg@line-forces
- Patrol ships' habits differed from the ones of the commercial Alg@liners; you don't get to know about the patrol ships' manoeuvres beforehand
- Merikarhu is the only Alg@liner that probes the Baltic deeper than at 5 m depth (CTD)
- Trivia: Silja Opera is the only Alg@liner that has visited the Baltic deeper than at 5 m depth (more later)

2000 – Sea scouts

Supporting Actors

Aki Mäkinen, Kaisa Luodekari, Jari Päckilä, Jukka Kostainen
+ unnumbered group of sea scouts
MTLAlg@crew



- Sea scouts provide the bulk of the blue-green algal observations
- They also measure Secchi depths

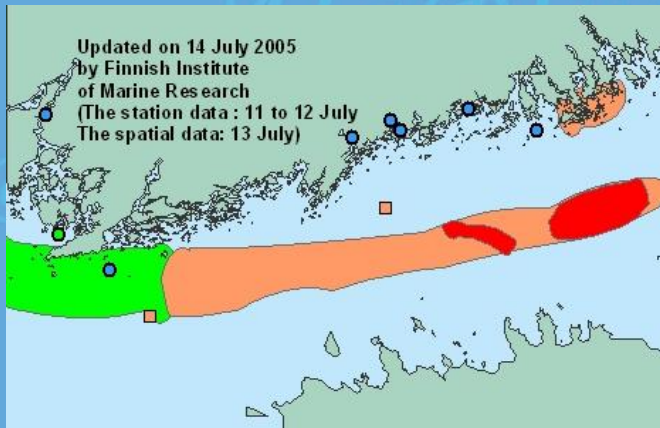
2002 – Coastal pilots brought the algal bloom maps

Leading Actress

**Super Puma,
Dornier, Agusta-Bell**

Supporting Actors

Erkki Uitti, Mikko Paiho,
Antti Pesari, Santtu
Mannila, Ville Marttila
(Rajavartiolaitoksen
vartiolentolaivue)
MTLAlg@crew



- Maps over the blue-green algal blooms in the Finnish sea areas were introduced as a new product
- Coastal Guard air bases in Helsinki and Turku fax the eye-based maps
- It is quite easy to judge the flight route from the algal distributions

2003

Leading Actress

**Silja Opera (a.k.a.
Viking Saga, Sally
Albatross)**

Supporting Actors

MTLAlg@crew

Production

Henrik Bachér, Mikael
Lindholm, Anders
Nyman, Birgitta Öhman,
Christina Nousiainen
(Silja / Tallink Silja)

Direction

Helsinki-St. Petersburg
Helsinki-Tallinn-Riga
Helsinki-Mariehamn-
Visby



- SO is the latter of the explorers of the Eastern Gulf of Finland. Furthermore, she is the only true Alg@line cruiser; she provides no room for cars
- Don Quixote of the Alg@line (although being a she): burned all the way to the hull in Stockholm port in 1990, was re-built, sank onto the Porkkala shoal in 1994, ran aground in St. Petersburg port in 2003
- Currently she steams in the Mediterranean, replacing a ship that sank in April 2007!

2003

Leading Actress

Kristina Brahe

Supporting Actors

Jouni Törrönen, Pentti
Välipakka, Pauli Haimi
(Kaakkois-Suomen
ympäristökeskus)

Katja Pellikka, Päivi
Munne, Ilppo Kajaste
(Helsingin kaupungin
ympäristökeskus)

Production

Mikko Partanen (Kristina
Cruises)

Direction

Savonlinna-Vyborg-
Kotka-Helsinki-
Mariehamn



- KB made a comeback as an Alg@liner

2004

Leading Actress

Romantika

Supporting Actors

Andres Jaanus, Inga Lips
(EMI)

Urmas Lips, Raivo

Portsmouth (EMA)

Production

Tallink

Direction

Helsinki-Tallinn

Stockholm-Tallinn



- Romantika was engaged to back-up the retiring Finnjet
- Later, she chose the route Tallinn-Stockholm in 2006
- The transfer of the equipment from Finnjet to Romantika in Tallinn port was undoubtedly the fastest in the Alg@line history; from the ship to another about 10 min

2006

Leading Actress

Galaxy

Supporting Actors

Inga Lips, Urmas Lips (Estonian Marine Systems Institute)

Raivo Portsmouth (Estonian Maritime Academy)

Production

Tallink

Direction

Helsinki-Tallinn



- Galaxy replaced Romantika, and started to zigzag in and out the Gulf of Finland traffic
- The face of the actress has divided opinions
- She will change probably to the route Turku-stockholm in the early summer

2007

Leading Actress

Finnmaid

Supporting actors

MTLAlg@crew

Production

Anna-Liisa Perttilä,
Henrik Lindroos, Juha
Ahia, Lars Kvikström
(Finnlines)

Direction

Helsinki-Travemünde



- Finnlines hired Finnmaid as the new Baltic voyager
- The replaced Finnpartner currently acts under the Swedish flag, having Malmö as the home port
- Finnmaid is the first actress that allowed the Alg@line's aspects to be taken into consideration during her building process

2008

- TransPaper



Leading Actress

TransPaper

Supporting actors

SYKE MRC

SMHI

Production

TransAtlantic

Direction

Kemi – Oulu – Lübeck-
Göteborg

- First ferrybox line covering the whole Gulf of Bothnia
- 24 parameters measured + weather station

2009

Leading Actress

Baltic Princess

Supporting Actors

Villu Kikas, Urmas Lips, Raivo Portsmouth
(EMA)

Production

Tallink

Direction

Helsinki-Tallinn



Leading Actress

Viktorija

Supporting Actors

Andres Jaanus(EMI)

Production

Tallink

Direction

Tallinn - Stockholm

2011

Leading Actress

MTA Louhi

Supporting Actors

SYKE

Ministry of Defence

Production

Uudenkaupungin työväene Oy

Direction

Random walk, harbour Upinniemi



2012



Leading Actress

Finnsea

Supporting Actors

SYKE

Production

Finnlines

Direction

St Petersburg-Helsinki-Antwerpen-Bilbao

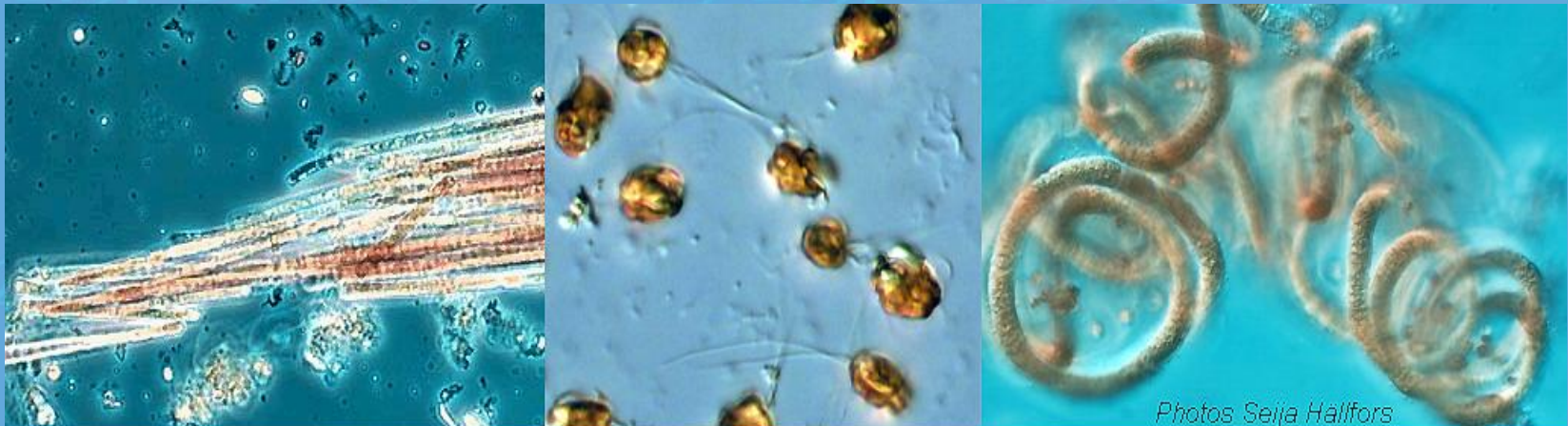
Alg@line *Alg@line*

2013 - Celebrating 20 years of Alg@line!

Alg@line *Alg@line*

Alg@line *Alg@line*

Alg@line *Alg@line*



Photos Seija Hallfors